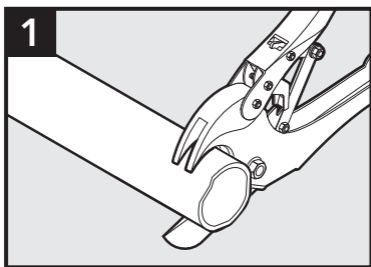
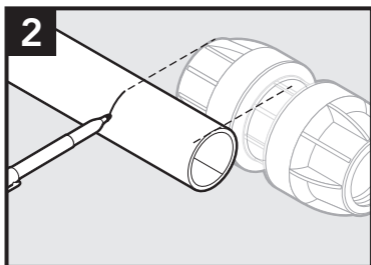


Clear-Lock

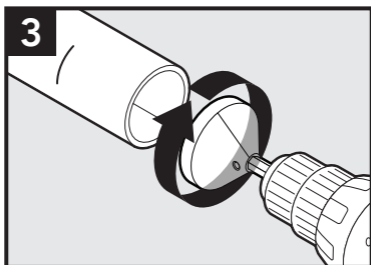
Installation Instructions



Cut conduit flush with duct cutters.

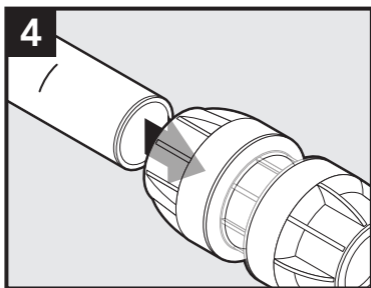


Align both ducts at the center of the coupler and mark ends.



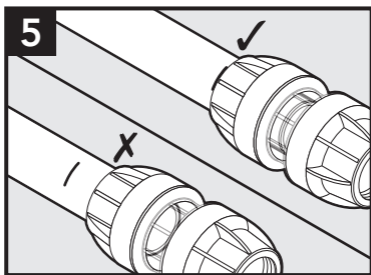
Chamfer the end to allow for smooth insertion.

Installation Instructions



Do not unscrew Bell End. Push conduit into coupler to the mark to ensure O-ring is seated around the duct. The clear midsection allows for visual confirmation that duct is properly seated.

Hand insert only. Do not use hammers or blunt force.



Repeat process with second piece of duct.

Dura-Line Corporation
11400 Parkside Drive, Suite 300
Knoxville, TN 37934



dura·line