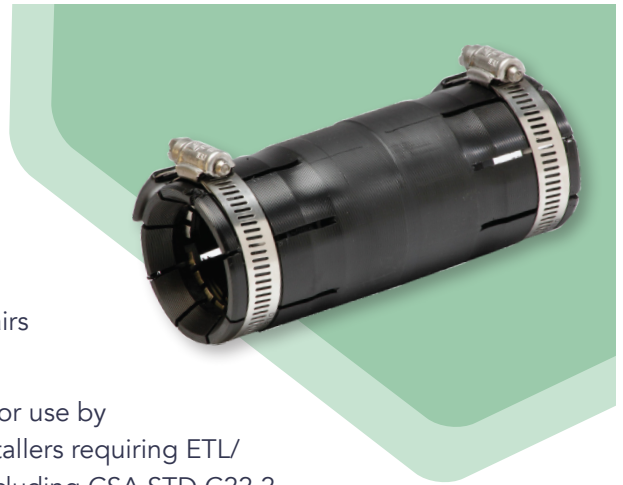


STANDARD ACCESSORIES

SHUR-LOCK II COUPLER

- ▶ Designed for coupling HDPE & PVC conduit
- ▶ Can also be used to couple dissimilar conduits such as HDPE to PVC, threaded or non-threaded metal conduit, or fiberglass (FRP) conduit
- ▶ Stainless steel band clamps (hand tightened using a 5/16" nut driver) and locking ring
- ▶ Pre-lubricated O-ring forms an air-tight seal to withstand 125 PSI
- ▶ One person installation; re-enterable, no special tools required
- ▶ Air- and water-tight
- ▶ No ID reduction
- ▶ Excellent pull-out strength on HDPE, PVC, FRP and steel
- ▶ No-Stop version available for confined areas or repairs (*NS)
- ▶ Specialized for use by electrical installers requiring ETL/UL listing, including CSA STD C22.2 18.3-04 and UL STD 514B
- ▶ NOTE: Certain sizes ETL-listed for use with HDPE and PVC for underground and concrete encased applications only! Not for use with PVC in above-ground applications. Not premise (indoor) rated
- ▶ UV resistant



ORDER REFERENCE

DESCRIPTION		NOMINAL PULL-OUT STRENGTH (LBS)	PACKAGING	SHIP WEIGHT (LBS)/CTN	PART #
1.00" Shur-Lock II Coupler SDR 1.315" ± 0.020"		600	10/ctn	4.5	20000118
1.25" Shur-Lock II Coupler SDR 1.660" ± 0.020"		700	10/ctn	5.2	20000120
1.25" Shur-Lock II Coupler HYB 1.590" ± 0.020"		700	10/ctn	5.2	20000121
1.50" Shur-Lock II Coupler SDR 1.900" ± 0.020"		700	10/ctn	5.8	20000122
2.00" Shur-Lock II Coupler SDR 2.375" ± 0.020"		700	10/ctn	6.7	20000123
2.00" Shur-Lock II Coupler-Extended SDR 2.375" ± 0.020" (8.25" long vs 5.75" standard)		700	10/ctn	6.7	20000264
2.50" Shur-Lock II Coupler SDR 2.875" ± 0.020"		1,000	6/ctn	7.7	20000172
3.00" Shur-Lock II Coupler SDR 3.500" ± 0.020"		1,000	6/ctn	9.8	20000173
4.00" Shur-Lock II Coupler SDR 4.500" ± 0.020"		1,000	4/ctn	10.7	20000245
5.00" Shur-Lock II Coupler SDR 5.563" ± 0.020"		1,000	2/ctn	8.3	20000254
6.00" Shur-Lock II Coupler SDR 6.625" ± 0.020"		1,000	2/ctn	9.9	20000256

Please specify if ETL listing is required



+1 800 847 7661
WWW.DURALINE.COM



SHUR-LOCK II COUPLER W/NO CENTER STOP

Center stop is removed to allow the coupler to be pulled back over the end of the duct for limited clearance installations.

DESCRIPTION		NOMINAL PULL-OUT STRENGTH (LBS)	PACKAGING	SHIP WEIGHT (LBS)/CTN	PART #
1.00" Shur-Lock II Coupler SDR 1.315" ± 0.020"		600	10/ctn	4.5	20002340
1.25" Shur-Lock II Coupler SDR 1.660" ± 0.020"		700	10/ctn	5.1	20000236
1.50" Shur-Lock II Coupler SDR 1.900" ± 0.020"		700	10/ctn	5.7	20002341
2.00" Shur-Lock II Coupler SDR 2.375" ± 0.020"		700	10/ctn	6.7	20000237
2.50" Shur-Lock II Coupler SDR 2.875" ± 0.020"		1,000	6/ctn	7.6	20000238
3.00" Shur-Lock II Coupler SDR 3.500" ± 0.020"		1,000	6/ctn	9.7	20000239
4.00" Shur-Lock II Coupler SDR 4.500" ± 0.020"		1,000	4/ctn	10.6	20000260
5.00" Shur-Lock II Coupler SDR 5.563" ± 0.020"		1,000	2/ctn	8.1	20001531
6.00" Shur-Lock II Coupler SDR 6.625" ± 0.020"		1,000	2/ctn	9.6	20000261

RECOMMENDED ACCESSORY: PALM RATCHET

Used with Shur-Lock II and Split-Lock couplers.

DESCRIPTION	PACKAGING	SHIP WEIGHT (LBS)	PART #
Palm Ratchet with 5/16" and 7/16" Sockets	each	1	20002747

