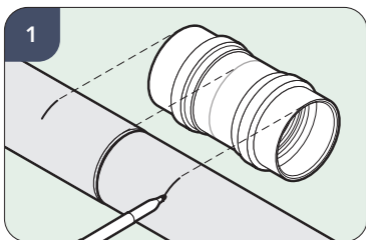
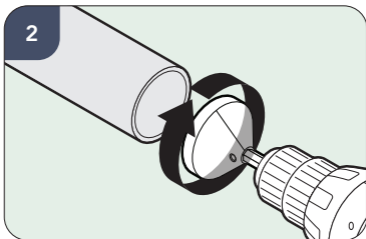


ConduitConnect™ Coupler

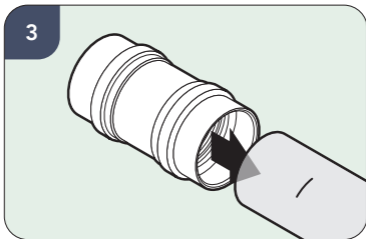
Installation Instructions



Step 1: Align both ducts at the center of the coupler and mark ends.



Step 2: Chamfer the end of each conduit for smoother insertion, unless using factory-beveled HDPE sticks.



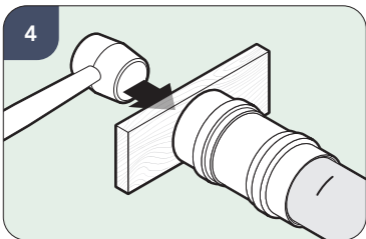
Step 3: Push the coupler onto the conduit.



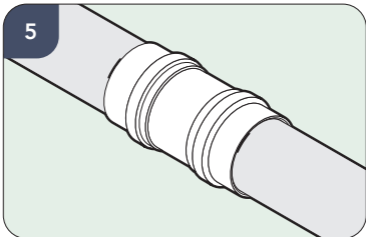
dura·line

An Orbia business.

Installation Instructions



Step 4: If the coupler cannot be pushed to the center stop by hand, use a rubber mallet and wooden block to ease the coupler to the marker line, ensuring a secure fit.



Step 5: Repeat the process for the second conduit, noting that the mallet and block may need to be used from the opposite end of the conduit.

Dura-Line Corporation
11400 Parkside Drive, Suite 300
Knoxville, TN 37934



dura·line

An Orbia business.