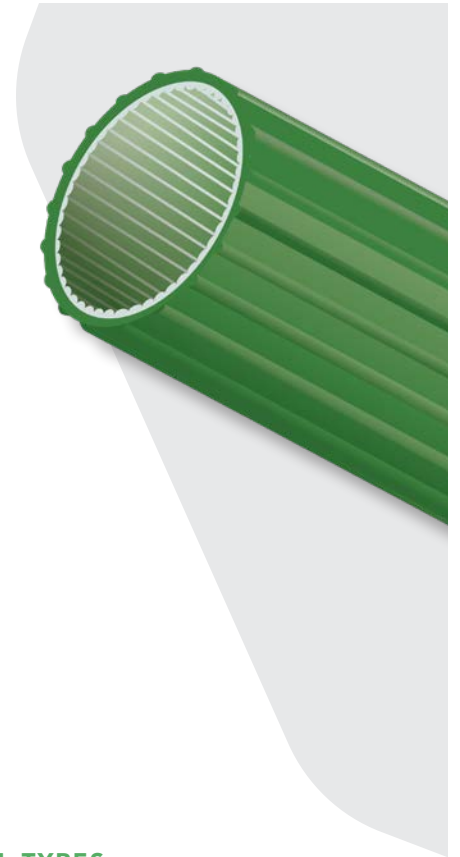


## STANDARD

# RIBBED IN/OUT

- Manufactured from flexible HDPE, makes gradual bends without special equipment
- External ribs help reduce spiraling during duct installation and reduces installation forces when installed into conduit
- Internal ribs reduce the the coefficient of friction during cable placement
- Continuous lengths reduce joining costs
- Excellent low temperature properties, allows installation in cold climates
- Outstanding long term cable protection from shifting ground, rock and root impingement
- Provides a permanent pathway, simplifies future cable repairs or replacement



### INSTALLATION TYPES

Existing Conduit

### SIZE RANGE AVAILABLE

1.0"      1.25"      1.5"

### WALL TYPES

True SIDR-9

### STANDARD COLORS



## FEATURES

### STANDARD

**FOOTAGE MARKINGS** Sequential foot or meter markings. Custom print streams available.

**INTERNAL RIBS** Internal straight ribs greatly reduce friction for longer, faster pulls

### OPTIONS

**SILICORE** is co-extruded with the tough HDPE jacket creating a super, slick permanent lining. SILICORE lined ducts allow for higher speed cable jetting and longer cable pulls.

**PREINSTALLED TAPE** Factory pre-installed Bull-Line™ Pull Tape with EVEN-LOAD™, ensures extra slack at any access point throughout the reel. Available 500lb - 6,000lb tensile strength or locatable.

**EXTERNAL STRIPES** can be added from our standard color offering to facilitate visual identification.

**UV PROTECTANT** available for aerial/lashed placement



+1 800 847 7661  
WWW.DURALINE.COM



## RIBBED IN/OUT TECHNICAL SPECIFICATIONS

PIPE SIZE	1"	1¼"	1½"
NOM OD (IN)	1.274	1.580	1.880
OD TOLERANCE +/-	0.012	0.012	0.012
BEND RADIUS (IN) SUPPORTED	13	17	19
BEND RADIUS (IN) UNSUPPORTED	26	34	38
MIN. WALL (IN)	0.111	0.115	0.157
WALL TOLERANCE +	0.020	0.020	0.020
AVG ID (IN)	0.121	0.125	0.167
WEIGHT (#/FT)	0.190	0.247	0.389
SWPS (LBS)	1,168	1,678	2,226

TRUE SIDR-9

## RIBBED IN/OUT NOTES

- Bend Radius  
½" through 1 ½" Supported Bend Radius 10 times the OD      Unsupported Bend Radius 20 times the OD
- During cable placement, large sweeping bends are recommended over tighter bends. Pre-formed sweeps are recommended for conduit sizes 8" through 16" diameters.
- SWPS (Safe Working Pull Strength) is calculated using a 25% safety factor with the minimum resin tensile strength of 3,000 psi, the average OD and average wall thickness.
- Internal or external ribs are in addition to the average wall and for determining OD and ID dimensions. The average rib height to be added is 0.020".
- Add 0.016 #/ft for ribbed products 1 1/2" and less. For 2" and larger, add 0.025 #/ft.



+1 800 847 7661  
WWW.DURALINE.COM

