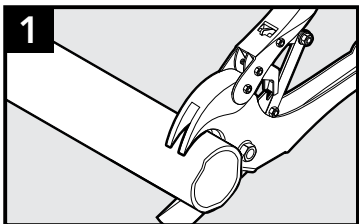
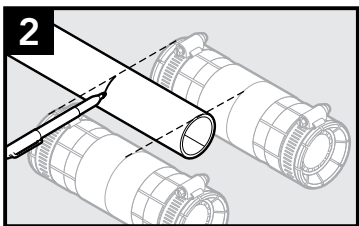


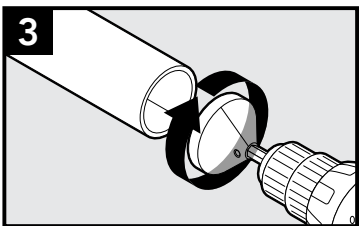
# NS (No-Stop) Shur-Lock II Installation Instructions



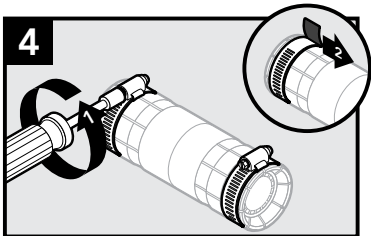
Cut conduit flush with duct cutters.



Overlap ends of conduit. Place duct at center of coupler and mark end. Repeat for second duct.



Chamfer the end to allow for smooth insertion.



Loosen band clamps and move them towards the middle of the coupler. Lightly tighten to hold in place during conduit insertion.

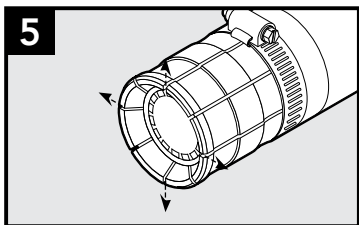
*(continued)*

Dura-Line Corporation  
11400 Parkside Drive, Suite 300  
Knoxville, TN 37934

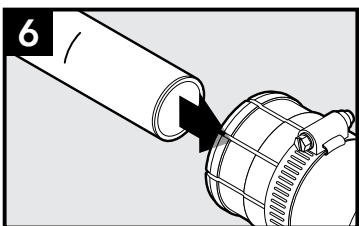


**dura·line**

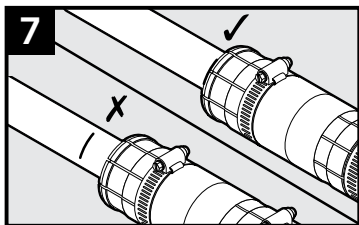
# Installation Instructions



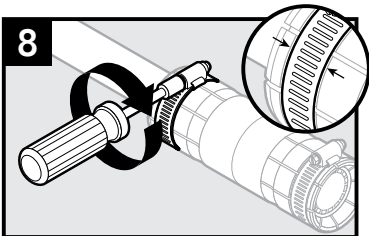
Spread tabs on each end of the coupler so there is a 1/4" gap between tabs. For couplers 3" or larger, a spreader tool may be helpful in spreading the tabs.



Push conduit into coupler. To allow duct ends to align in tight spaces, coupler can be pushed completely on to one duct.



Once duct ends are aligned, use the markings made in Step 2 to reposition the coupler centrally over the duct splice.



Verify the band clamp is positioned in the groove and fully tighten it down with a 5/16" nut driver. Never use a drill to tighten clamp.

For additional installation information, request Dura-Line's DCEB-12004 Technical Bulletin