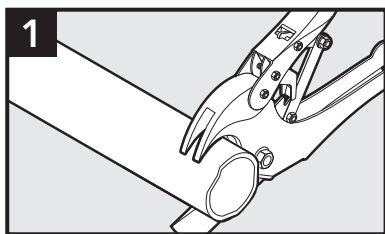
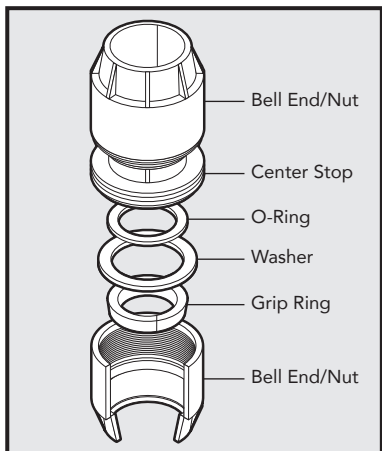


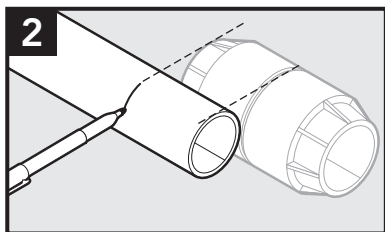
Push-Lock

Installation Instructions

Package Contents

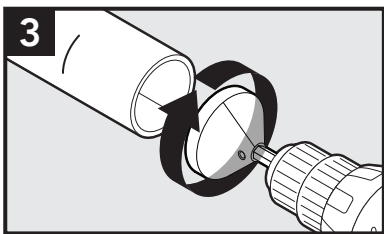


Cut conduit flush with duct cutters.

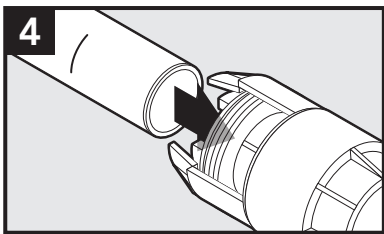


Overlap ends of conduit. Place duct at center of coupler and mark end.

Installation Instructions

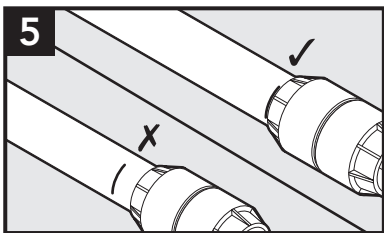


Chamfer the end to allow for smooth insertion.



Do not unscrew Bell End. Push conduit into coupler to the mark to ensure O-ring is seated around the duct.

Hand insert only. Do not use hammers or blunt force.



Repeat process with second piece of duct.

Dura-Line Corporation
11400 Parkside Drive, Suite 300
Knoxville, TN 37934



dura·line