

SPECIALTY

SMOOTH-COR FLEX

- Flexible: Reduces/eliminates sweeps and bends
- Crush resistant: Equivalent to Schedule 40 PVC
- Lightweight: Easier installation, 40% lighter than PVC
- Compatibility: Easily adapts to other conduit materials
- Glueless Coupling: Safe, quick assembly
- Gasketed: Air and watertight
- Low COF: Longer cable pulls with lower cable stress

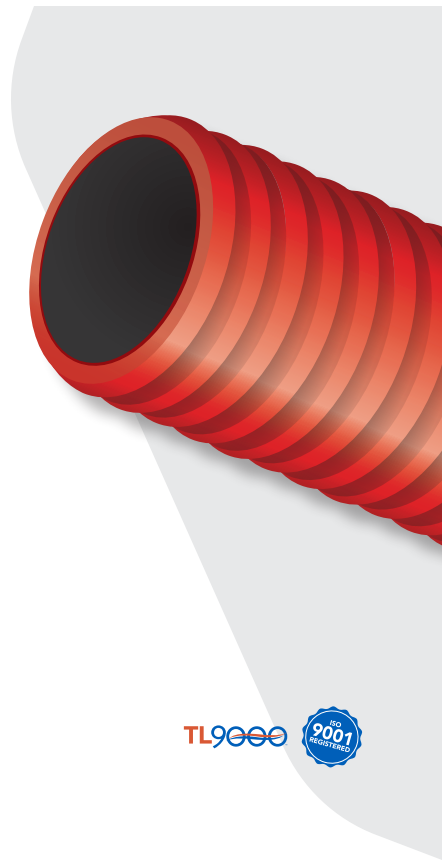
installation types

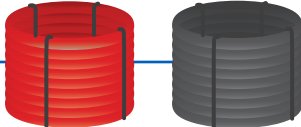
Underground
Direct Bury
Concrete Encasement

size range available

2.0"
3.0"
4.0"

standard colors



FEATURES	STANDARD
	Available only as empty
	250' Coils Packaging / 3 coils per pallet 
	OPTIONS
TWO KIT OPTIONS AVAILABLE FOR JOINING SMOOTH-COR FLEX 1. Smooth-Cor Flex Coupler Kit joins Smooth-Cor Flex to Smooth-Cor Flex 2. Smooth-Cor Flex Adapter Kit joins Smooth-Cor Flex to HDPE, PVC, FRE, and TGS	



+1 800 847 7661
WWW.DURALINE.COM



SMOOTH-COR FLEX PACKAGING

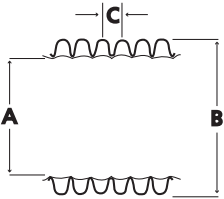
SIZE	LENGTH	WEIGHT/COIL	COILS/PALLET	PALLETS/TRUCK	QUANTITY/TRUCKLOAD	RED PART NO	GRAY PART NO
2"	250'	55 lbs	3	26	19,500'	20000670	20004695
3"	250'	108 lbs	3	26	19,500'	20000671	20004696
4"	250'	142 lbs	3	24	18,000'	20000672	20004732

SMOOTH-COR FLEX TECHNICAL SPECIFICATIONS

LENGTH	250' COILS	
PIPE STIFFNESS	ASTM D 2412	2" 75 LBS/IN/IN 3" 88 LBS/IN/IN 4" 116 LBS/IN/IN
IMPACT RESISTANCE PER FALLING TUP	ASTM D 2444	45-50 FT-LB @ 72 degrees 40 FT-LB @ 32 degrees
COUPLER WATER & AIR TIGHT	ASTM D 3212	10 psi

SMOOTH-COR FLEX TECHNICAL SPECIFICATIONS

DUAL WALL	A I.D.	B O.D.	C TOTAL WIDTH	INNER WALL THICKNESS	OUTER WALL THICKNESS
2"	2.045" 51.943mm	2.495" 63.373mm	0.325" 8.255mm	0.020" ± 0.010" 0.508mm ± 0.254mm	0.023" ± 0.007" 0.584mm ± 0.178mm
3"	2.950" 74.930mm	3.510" 89.154mm	0.360" 9.144mm	0.027" ± 0.010" 0.686mm ± 0.254mm	0.033" ± 0.007" 0.838mm ± 0.178mm
4"	3.980" 101.092mm	4.730" 120.142mm	0.650" 16.510mm	0.027" ± 0.010" 0.686mm ± 0.254mm	0.033" ± 0.007" 0.838mm ± 0.178mm



MATERIAL DESIGNATION

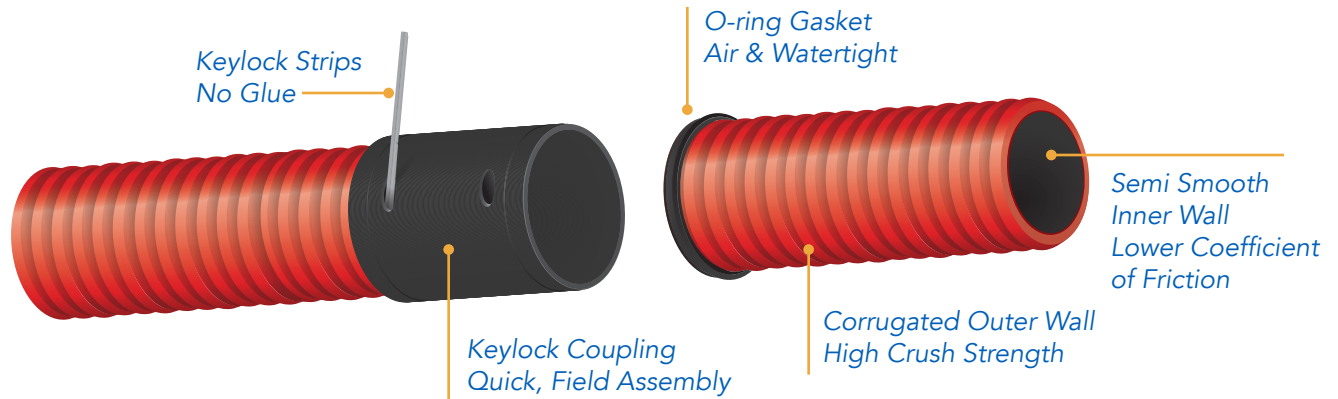
TEST METHOD	DESCRIPTION	VALUES
ASTM D 3350	HDPE Resin Cell Classification	334480 C or E
ASTM D 638	Tensile strength at yield	3000 PSI Min
ASTM D 638	% Ultimate Elongation Value	400 Min
ASTM D 792	Density g/cm ³	0.941 - 0.959
ASTM D 1238	Melt Index, g/10 min Condition E	0.5 Max
ASTM D 1693	ESCR Condition B, F10	96 hrs.



+1 800 847 7661
WWW.DURALINE.COM



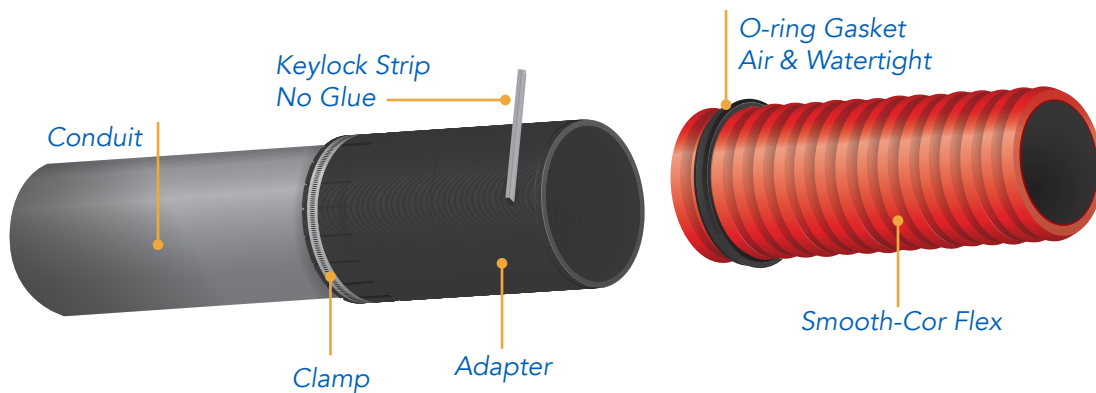
SMOOTH-COR FLEX COUPLER KIT (SMOOTH-COR FLEX TO SMOOTH-COR FLEX)



SMOOTH-COR FLEX COUPLER KIT

EACH KIT INCLUDES:	SIZE	KITS/PKG	PART NUMBER
1 Keylock Coupling 2 Keylock Strips 2 O-ring Gaskets	2"	10 kits / case	20000292
	3"	6 kits / case	20000293
	4"	4 kits / case	20000231

SMOOTH-COR FLEX ADAPTER KIT (SMOOTH-COR FLEX TO HDPE, PVC, FRE, THREADED GALVANIZED STEEL)



SMOOTH-COR FLEX ADAPTER KIT

EACH KIT INCLUDES:	SIZE	KITS/PKG	PART NUMBER
1 Adapter 1 Keylock Strip 1 O-ring Gasket	2"	10 kits / case	20000286
	3"	6 kits / case	20000287
	4"	4 kits / case	20000252