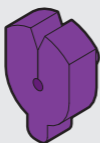
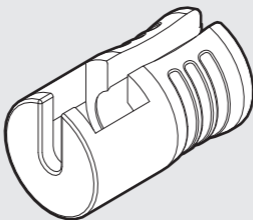


5mm, 7mm, 8mm

# Divisible Duct Seal

## Installation Instructions

### Package Contents



0.9mm-1.2mm\*



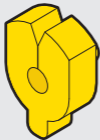
1.3mm-1.5mm\*



1.6mm-1.8mm\*



1.9mm-2.2mm\*



2.25mm-2.5mm\*

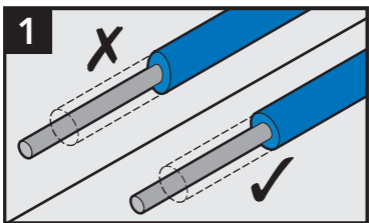
\*Cable Outer Dimensions

Dura-Line Corporation  
11400 Parkside Drive, Suite 300  
Knoxville, TN 37934

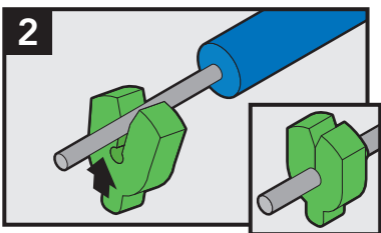


**dura·line**

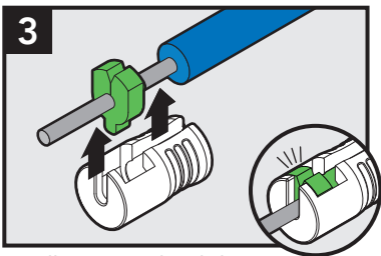
# Installation Instructions



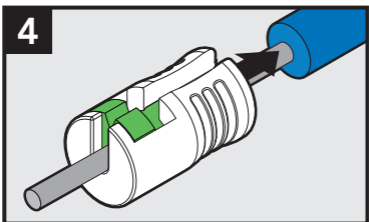
Cut duct straight.



Select required seal and install on cable.



Install cover until it clicks.



Push connector down onto the duct.