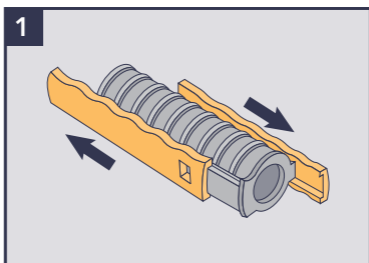
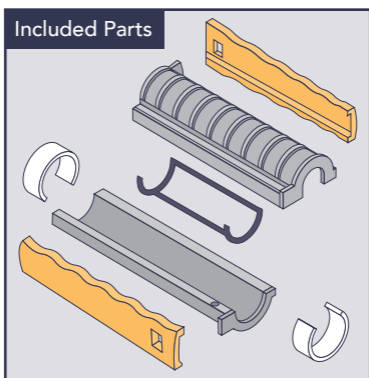
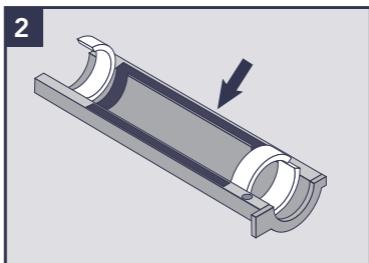


# MicroDuct Split Coupler

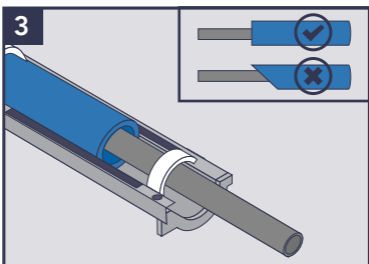
## Installation Instructions



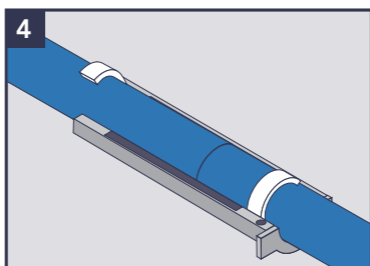
Remove the yellow clasps by sliding them off with gentle pressure.



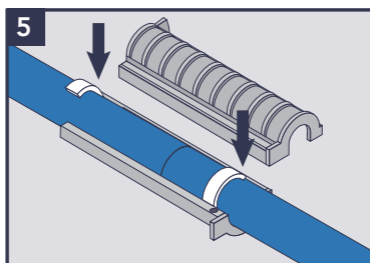
Apply silicone grease along both rubber seals, ensuring the surface areas of the seals are completely covered.



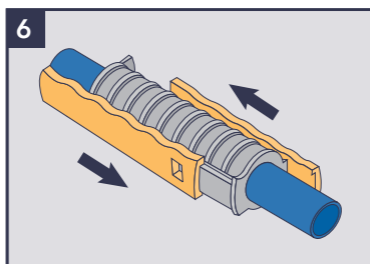
Clip one duct into the white grip ring that is attached to the connector. Ensure that the ends of the duct are cut square.



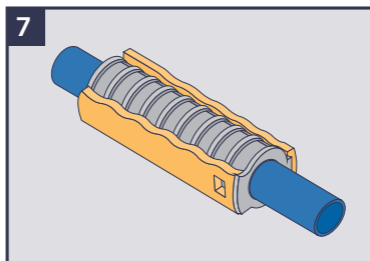
Clip the second duct into place and visually check that the seal has not been displaced. Ensure the cable is straight.



Place the top of the connector into position.



Replace the two yellow clasps by hand.



Tap them with a soft mallet until the end of the clasp is level with the end of the connector.

 **dura·line**  
An Orbia business.