

STEEL REEL RETURN GUIDELINES



- 1 Check for Steel Reels that meet Acceptable Guidelines (must originate from Dura-Line manufacturing plant)
- 2 Call Reel Return Coordinator for RA# 800-847-7661 or email reelreturn@duraline.com
- 3 All Reels will be inspected upon receipt. To receive credit, all Reels must meet Conditions of Return
- 4 Unacceptable Reels will not receive credit

ACCEPTABLE STEEL REELS FOR REUSE



STEEL REEL WITH STEEL STAVES

Standard steel reel with steel staves returned in acceptable condition that can be reused.

- 8-10 spoke construction
- clip or bolt-in place stave
- single arbor plate



STEEL REEL WITH WOOD OR STEEL REINFORCED WOOD STAVES

Standard steel reel with wood staves returned in acceptable condition that can be reused.

- bolt-in place wood stave



STEEL REEL WITH STEEL STAVES and double arbor plate

Standard steel reel with a double arbor plate (center reel hub) and steel staves returned in acceptable condition that can be reused.

- double arbor plate

CONDITIONS OF RETURN

Reels cannot have one or more of the following issues if a reel credit is to be issued:

- Bent, broken or flattened flanges (spokes)
- Bent, broken or missing staves
- Broken or cracked welds
- Non-Dura-Line reels

LOCATIONS

Georgia (478-553-0024)
1000 George J. Lyons Parkway
Sandersville, Georgia 31082

Kentucky (606-248-6456)
804 South 23rd Street
Middlesboro, Kentucky 40965

Missouri (417-926-7670)
1299 Industrial Park Road
Mountain Grove, MO 65711

Nevada (775-359-9118)
1284 East Glendale Avenue
Sparks, Nevada 89431

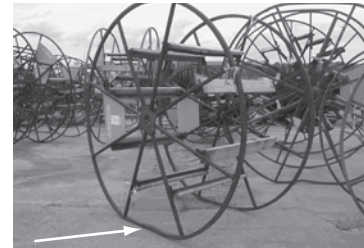
www.duraline.com

Ohio (440-322-1000)
860 Garden Street
Elyria, Ohio 44035

Oklahoma (918-302-0330)
10 Steven Taylor Boulevard
McAlester, Oklahoma 74501

Utah (801-299-8348)
80 East Union Avenue
North Salt Lake City, Utah 84054

UNACCEPTABLE



Flattened Flange



Broken Staves

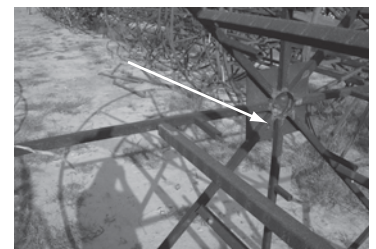


Bent Flange (Spoke)



Cracked Weld & Bent Flange (Spoke)

COMPETITOR'S REEL



Stub tubes to attach staves